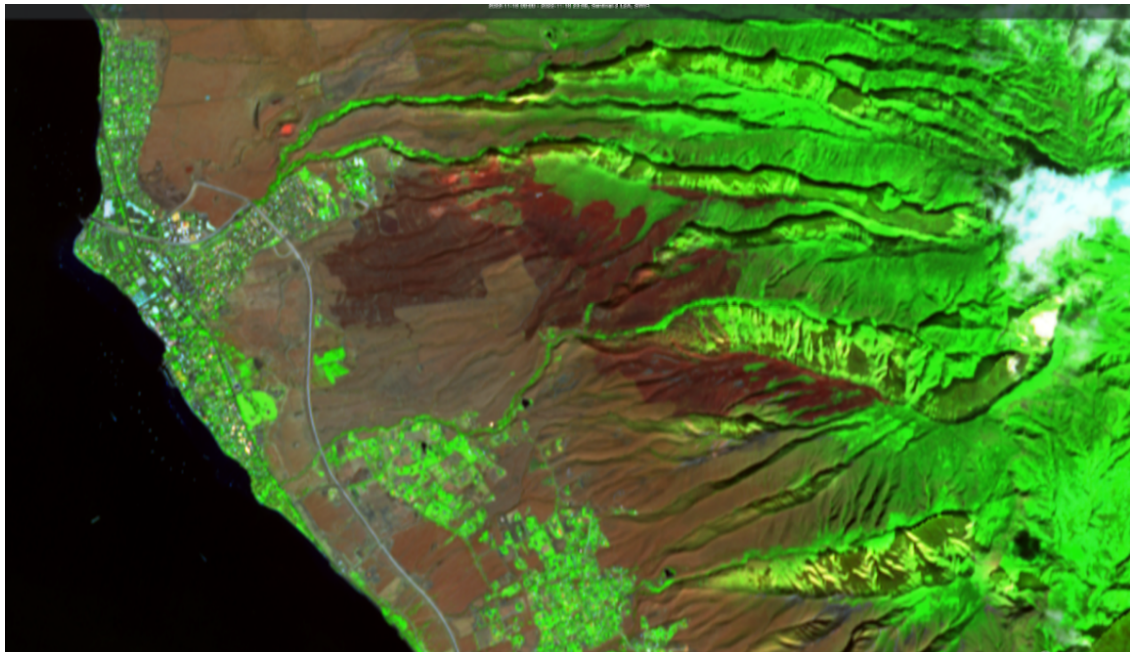




November 2022

Brought to you by Hawai'i Wildfire Management Organization and University of Hawai'i Cooperative Extension, CTAHR, Fire & Ecosystems Program. Partner submissions encouraged!

Weather & Climate Outlook



Sentinel-2 infrared satellite image of the fire scar on West Maui this November

Wet season is in full swing over the Western Pacific and setting in for Hawai'i. However, drought still persists over significant portions of the Hawaiian Islands. The 2,100 acre fire on West Maui earlier this month was a stark reminder of persistent, dry conditions in many leeward areas. [Longer term forecasts](#) call for above average rainfall for Hawai'i and the Western Pacific over the coming

- [National Significant Wildland Fire Potential Outlook](#) September through December 2022
 - [US Drought Monitor for Hawai'i](#) - current conditions
 - [US Drought Monitor](#) for Palau, Guam, CNMI, FSM, Marshalls and American Samoa
 - [Hawai'i and USAPI Climate Summary](#) - 3rd Quarter 2022
-

Hawai'i Island Residents: Mauna Loa Eruption Information

With the recent eruption of Mauna Loa, our Hawai'i County emergency partners are working closely with Civil Defense and the U.S. Geological Survey's Hawaiian Volcano Observatory. They understand that there is a lot of anxiety and uncertainty in our community. It is important to rely on official and legitimate sources of information for the latest updates on the situation such as the following:

- <https://hawaii-county-volcano-hazards-hawaii-county-gis.hub.arcgis.com/>
 - <https://www.usgs.gov/volcanoes/mauna-loa/mauna-loa-eruption-webpage>
-

Wildfire in the Media: Hawai'i Business News & The Washington Post

alarming rise in wildfires. Coalitions are fighting back with new urgency and old tools.

NOVEMBER 11, 2022 BY CYNTHIA WESSENDORF



Photo: Aaron Yoshino

Hawai'i has had a lot of press lately about wildfires both in the Hawai'i Business News (article above) which you can read [HERE](#) and also in the Washington Post which you can read here: [Drought in Hawaii is fueling rare November wildfire concerns](#) (November 22, 2022)

Assessing Hawai'i Homes for Wildfire Risk





This month, 14 community members across the state spent 3 days in training to ready themselves for performing wildfire risk property assessments and serving as community ambassadors for wildfire information to residents living in their communities. Three of our County Fire Departments were also in attendance so they can support the home assessors as they complete 150 home assessments before June 30, 2023. Alongside our county and state agency partners, we congratulate this first cohort of Community Wildfire Ambassadors and Home Assessors! Your service is a worthy investment towards community wildfire preparedness and resilience, and you are making a difference.

News article to note:

- [“Community ambassadors trained to assess wildfire risk for Big Island property owners”](#) (Big Island Now)
- [“Fire Department being trained to assess wildfire risk for property owners”](#) (Kaua’i Now)
- [“Hawai’i homes assessed for wildfire risk”](#) (Big Island Video News)
- [DLNR’s press release](#)

Free home assessments are now available to homeowners in our state’s 15 Firewise communities (plus 3 Firewise-emerging communities). Please help us promote this program by directing homeowners to this website to learn more and to sign up for their free home assessment: www.hawaiiwildfire.org/home-assessments. You can also download and distribute the flyer found on the website ([or found here](#)).

This program is funded by Coalitions & Collaboratives, Inc. (Subaward #2022_18) and the US Forest Service (Grant #122-DG11052012-121).

Our Very Own Hometown Heroes



provide emergency preparedness information to area residents and visitors. The Firewise team demonstrated just how easy it is to request a wildfire risk property assessment with the click of a button from your phone (!) Our amazing community wildfire ambassadors also handed out keiki coloring books, Ready, Set, Go! handbooks and other wildfire preparedness tips and tricks. Folks from other booths made available emergency gear to prepare ahead of fires, Kona storms, and power outages; you name it! Mahalo to the event coordinators and all the participants and partners that made this event a huge success.

From Our Partners

Hawai'i Wildfire Management Organization (HWMO) has received funding from the US Forest Service Institute of Pacific Island Forestry to continue mapping fires across the Pacific region in partnership with the University of Hawai'i at Mānoa (UHM). The project will standardize the use of satellite images to build annual maps of fire perimeters (or fire scars) for Guam, Palau, Saipan, Tinian, Rota, and Yap. It will also do the same for the main Hawaiian Islands, building on ongoing efforts by HWMO and UHM to develop a comprehensive fire history for Hawai'i. Western Pacific maps are now available on the Pacific Fire Exchange website [HERE](#). Hawai'i data will be soon to follow, but if you're eager to know more, contact Clay Trauernicht at trauerni@hawaii.edu

Hawai'i Wildfire's Annual T-shirt Fundraising Campaign Is Here!

Subscribe

Past Issues

Translate ▾



Wear your shirt with pride and help raise awareness at the same time! To date, we've sold 100 or so items out of 150 which is our goal. Your support means we raise funds to keep our doors open, so we can continue to provide high quality and impactful programming across Hawai'i and the Pacific islands area. Check out the performance, or active shirts, tees in all sizes, with the wildfire messages on the back (right)! **Order at the link [HERE](https://bit.ly/HWMOshirtsale) (bit.ly/HWMOshirtsale) now through December 5** to receive your gear in time for the holidays. And mahalo for all your support—we couldn't do what we do without your time, energy, and support.

Pacific Fire Exchange (PFX) Highlights



Earlier this month, we held a really fun and productive Talk Story Tuesday: Grazing to Reduce Blazing where we invited University of Hawai'i's Dr. Mark Thorne, Specialist, State Range and Livestock Extension and Dr. Clay Trauernicht, Fire and Ecosystems Specialist. If you haven't seen it yet, watch it [HERE!](#)

Funding Opportunities

- [Joint Fire Science Program Notice of Funding Opportunity Announcements](#), ****NOW OPEN** due 12/20/2022**
- Department of the Interior Technical Assistance Program Grants for Fiscal Year 2023 for Technical Assistance (TAP), Maintenance Assistance (MAP), Coral Reef and Natural Resources (including Invasive Species projects) (CRNR), and Brown Tree Snake (BTS) are open with a **deadline of March 17, 2023**. More info [HERE](#) and applicants can go to [grants.gov](https://www.grants.gov) to apply.

HAWAII and PACIFIC:

Webinars, Research, Reports and News

- [Lahaina residents using native plants to help prevent future brush fires](#) (KITV news, November 25, 2022)
- Webinar Recording: [Invasive Pest Mini Conference](#) with Hawai'i Department of Agriculture and the speakers - Helmuth Rogg, Chris Kishimoto, Noni Putnam, Janis Matsunaga, Darcy Oishi, and Mohsen Ramadan.
- Webinar Recording: September Pacific RISSC—[Hawaiian Forest Bird Conservation](#). Climate change and invasive species are impacting the forest birds. What can we do?
- [High winds fan flames of brush fire in Pāhala](#) (Big Island Now, November 21, 2022)
- [Update: Brush fire burns 8 acres in Mā'alaea, now 100% contained](#) (Maui Now, November 20, 2022)
- [Be prepared for emergencies](#) (Lahaina News, Nov 18, 2022)
- [Flare up of Kaua'ula fire burns in hills above Launiupoko](#) (Maui Now, November 20, 2022)
- [Fire investigators training to combat arson on Cross Island Road](#) (Kuam News, November 17th 2022)
- [Lahainaluna farming program for boarders revives orchard](#) (in the orchard at the top of the campus that was destroyed by a raging brush fire in 2018) The Maui News, NOV 16, 2022
- [Controlled agriculture burn to be conducted near Kaumakani](#) (Kaua'i Now, November 16, 2022)
- [Small brush fire in Koke'e quickly extinguished](#) (Kaua'i Now, November 12, 2022)
- [West Maui brush fire still at 2,100 acres, 40 percent contained](#) (The Maui News, NOV 14, 2022)
- [Increasing the Resilience of Ecological Restoration to Extreme Climatic Events](#) (Zabin et al. 2022)

- [DoD sites identified for livestock grazing](#) (The Daily Post Guam, March 2022)

Fire Adapted Communities Learning Network

On behalf of the Rural Voices for Conservation Coalition, the network is asking for your help to gain an improved understanding of on-the-ground capacities and challenges related to prescribed fire; the current ability to grow capacity; and impacts of the widespread loss of prescribed fire insurance policies. The survey will also help collaborators create a publicly available list of organizations that implement, plan, and support prescribed fire. Please help if you can – the survey closes **Wed, Nov. 30th, 2022**:

<https://www.ruralvoicescoalition.org/rxfiresurvey>

Other Meetings, Conferences and Courses

- [Wildfire Preparedness for Agricultural Producers and Rural Landowners](#) - self directed (Oregon State)
- [Free Prescribed Fire Training Course](#) - self directed (U of Florida)
- Co-hosted by the Northwest Fire Consortium, Oregon State University Extension Fire Program and the the US Forest Service PNW Research Station: [Considering Equity in Wildfire Risk and Protection](#) (Thursday, December 1, 10am PST)

National News & Policy

- [Wildfire Smoke Alters Immune Cells, Promoting Inflammation](#) (Wildfire News & Opinion, October 31, 2022)

National and International Research and Reports

- [USGS Wildland Fire Trends Tool](#)
- [Wildland Fire Smoke in the United States: A Scientific Assessment](#) (Peterson, David L.; McCaffrey, Sarah M.; Patel-Weynand, Toral, 2022)
- [Getting More Fire on the Ground: Landscape-Scale Prescribed Burning Supported by Science](#) (USDA Rocky Mountain Research Station, Oct/Nov 2022)
- [Comparing the costs of an operational prescribed burning program to those of unplanned wildfires](#) (Joint Fire Science Program, October 2022)

National Multimedia: Webinars, Interviews, and Learning through Stories

- [The Big Burn](#) podcast explores the history and state of wildfire management today (NPR, November 22, 2022) on Apple Podcasts [HERE](#)
- [Marshall Fire \(CO\) story map](#) (facilitated learning analysis) December 30, 2021
- [Water-Starved Shrubs Likely Intensified Recent Wildfires in Southern California](#) (USGS news release, August 24, 2022)
- Webinar Recording: [Chemistry of Fires at the Wildland-Urban Interface](#) (National Academies, October 2022)

- Nāpu‘u Conservation Project is hiring for Pu'uwa'awa'a State Forest Reserve on Hawai'i Island, including a [Fire Outreach Associate](#), [Restoration & Outplanting Field Assistant](#) and a [Field Assistant](#).
- Kaua‘i Mosquito Research Coordinator – [Joint Hire with American Bird Conservancy](#)
- [ANPRO INVERTEBRATE & FOREST INVASIVE SPECIES BIOLOGIST](#) - ID# 222767. CLOSING DATE: November 30, 2022. INQUIRIES: Jobriath Rohrer 295-2556 (Oahu)

Share YOUR News.

This newsletter is a great way to keep our wildfire community connected!

If you have a news item, photo, or accomplishment to share with our community of wildfire professionals, please email it to wildfirecommunications@hawaiiwildfire.org.

We will feature it in the next newsletter or social media post!



Copyright © 2021 Hawai'i Wildfire Management Organization, All rights reserved.

www.PacificFireExchange.org

www.Hawaiiwildfire.org

Our mailing address is:

65-1279 KAWAIHAE RD., STE. 211, KAMUELA, HI, 96743

Want to change how you receive these emails?

You can [unsubscribe from this list](#).